

GOLDEN NATURE ESL

FEATURES

- Made from farm fresh eggs, Pasteurized and Homogenized
- Convenient 1 kg (2.2 lb) cartons
- Kosher and HALAL certified
- New Twist Off Cap for added convenience

ADVANTAGES

- Manufactured in a HACCP recognized facility
- No messy shells or cleanup
- Saves time
- ESL (Extended Shelf Life) product, produced under CFIA supervision
- Extends customer base

BENEFITS

- 100 % yield, no waste
- Ensures food safety (when handled as directed)
- Lowers labour costs
- Meets specific religious requirements

PRODUCT DESCRIPTION

Code 10783 12/1 kg (2.2 lb) cartons

- **Golden Nature ESL**
Whole Egg, Sodium Phosphates, Citric Acid

PREPARATION INSTRUCTIONS

Shake or mix well before using. Can be prepared on a grill or in a skillet, conventional/convection oven, or steamer. Stir product occasionally during cooking.

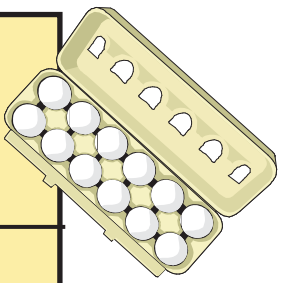
STORAGE & HANDLING

Storage: Store product at or below 4°C. Do not freeze.

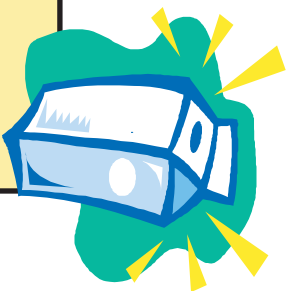
Shelf Life: Shelf life is 10 weeks from the date of production on carton products and 6 weeks from the date of production on bag-in-box products. Use within 3 days of opening carton or bag. Refrigerate and store in a sanitary manner after opening.

Nutrition Facts		10783
Per 50 g (3 Tbsp.)		
Amount	% Daily Value	
Calories 70		
Fat 5 g	8 %	
Saturated 1.5 g	8 %	
+ Trans 0 g		
Cholesterol 215 mg		
Sodium 80 mg	3 %	
Carbohydrate 1 g	1 %	
Fibre 0 g	0 %	
Sugars 0 g		
Protein 6 g		
Vitamin A	6 %	Vitamin C 0 %
Calcium	2 %	Iron 4 %





Guidelines for Converting Shell Eggs to EggSolutions® Liquid Egg Product



No. of Shell Eggs	LARGE EGGS			MEDIUM EGGS		
	Approx. Oz.	Wt. Gm.	Equivalent Vol. of ES Product	Approx. Oz.	Wt. Gm.	Equivalent Vol. of ES Product
1	1.8	50	3Tbsp	1.6	45	3 Tbsp
2	3.5	100	1/3 Cup + 1Tbsp	3.2	90	1/4 Cup + 2 Tbsp
3	5.3	150	1/2 Cup + 2 Tbsp	4.8	135	1/2 Cup + 1 Tbsp
4	7.1	200	3/4 Cup + 1 Tbsp	6.3	180	3/4 Cup
5	8.8	250	1 Cup	7.9	225	3/4 Cup + 3 Tbsp
6	10.6	300	1 1/4 Cup	9.5	270	1 Cup + 2 Tbsp
7	12.3	350	1 1/3 Cup + 1Tbsp	11.1	315	1 1/4 Cup + 1 Tbsp
8	14.1	400	1 1/2 Cup + 2 Tbsp	12.7	360	1 1/3 Cup + 2 Tbsp
9	15.9	450	1 3/4 Cup + 1 Tbsp	14.3	405	1 2/3 Cup
10	17.6	500	2 Cup + 1 Tbsp	15.9	450	1 3/4 Cup + 1 Tbsp
11	19.4	550	2 1/4 Cup	17.5	495	2 Cup
12	21.2	600	2 1/3 Cup + 2 Tbsp	19.0	540	2 Cup + 3 Tbsp
13	22.9	650	2 2/3 Cup	20.6	585	2 1/3 Cup + 1 Tbsp
14	24.7	700	2 3/4 Cup + 2 Tbsp	22.2	630	2 1/2 Cup + 1 Tbsp
15	26.5	750	3 Cup + 1 Tbsp	23.8	675	2 3/4 Cup
16	28.2	800	3 1/4 Cup	25.4	720	2 3/4 Cup + 3 Tbsp
17	30.0	850	3 1/3 Cup + 2 Tbsp	27.0	765	3 Cup + 2 Tbsp
18	31.7	900	3 2/3 Cup	28.6	810	3 1/4 Cup + 1 Tbsp
19	33.5	950	3 3/4 Cup + 2 Tbsp	30.2	855	3 1/2 Cup
20	35.3	1000	4 Cup + 1 Tbsp	31.7	900	3 2/3 Cup
21	37.0	1050	4 1/4 Cup	33.3	945	3 3/4 Cup + 2 Tbsp
22	38.8	1100	4 1/2 Cup	34.9	990	4 Cup + 1 Tbsp
23	40.6	1150	4 2/3 Cup	36.5	1035	4 1/4 Cup
24	42.3	1200	4 3/4 Cup + 2 Tbsp	38.1	1080	4 1/3 Cup + 1 Tbsp